

## Highlights:

- Eye catching complete family
- Fastest possible installation time with unique SpringFit™ innovation
- High intelligibility and sound accuracy
- Snapconnect™ enabling a fast and reliable connection

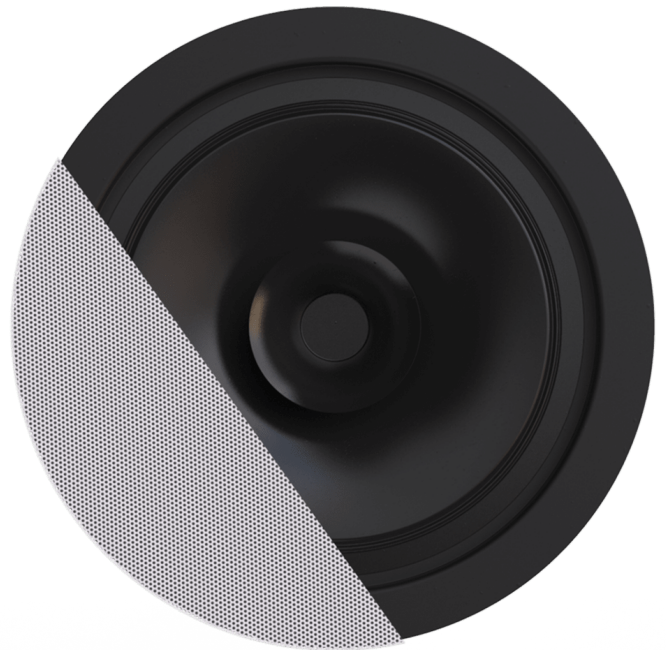
## Product information:

The unbeatable one. The CENA series are full-range ceiling speakers, designed to offer an unmatched solution for large scale public address projects. The SpringFit™ fixation offers the fastest possible installation time of any speaker available on the market, while the borderless grill design is absolutely unseen for any ceiling speaker in this segment. With the selection of high-quality cone materials, exceptional intelligibility and background music performance are guaranteed. The CENA Series are equipped with SnapConnect™, a faster, more reliable and safer choice for fixed installations, accepting solid and stranded wires with sections up to 4.0 mm².

The CENA506 features a 5" broadband driver with a continuous power handling of 10 Watt (RMS) and maximum power handling of 20 Watt. They are fitted by multi-tapping 100V line transformers with tapings for 6W and 3W.

## Applications:

- Corporate
- Retail
- Bars & Restaurants



## Impedance:

Ω 8 Ohm Ω 16 Ohm

Voltage:

 100 Volt

System specifications:

Peak power handling		40 W
Program power handling		20 W
Continuous power (AES)		10 W
Sound Pressure (Max. W/1m)	@ 100 V	103 dB
Sensitivity (1W/1m)		93 dB
Speaker type		Broadband
Connection		SnapConnect™
Impedance		8 Ω (CENA506)
		16 Ω (CENA510D)
Frequency	Response (± 3 dB)	100 Hz - 15 kHz
	Range (-10 dB)	80 Hz - 18 kHz
Line Transformer Tappings	1	6 W / 1667 Ω
	2	3 W / 3333 Ω
Dispersion	Conical	155°
Connection		Screw terminal
Drivers		5" Full Range

Product Features:

Cut-out measurement	5.91 " (Ø)
Dimensions	7.087 x 2.36 " (Ø x D)
Construction	ABS
Front finish	borderless finely perforated steel grill
Built-in depth	2.24 "
Mounting	SpringFit™ mounting system
Colours	White (RAL9003) (CENA506/W)
	Black (RAL9005) (CENA506/B)
Operating temperature	5 °F ~ 131 °F
Weight	1.46 lb

## Variants:

---

- CENA506/W - White version - 100V
- CENA506/B - Black version - 100V
- CENA510D/W - White version - 16Ω
- CENA506I/W - White version - 100V (RAL9016)
- CENA510DI/W - White version - 16Ω (RAL9016)