

CALI660

Safelatch™ 2-way 6.5" ceiling speaker with TwistFix™ grill

Highlights:

- Secure Safelatch™ system
- Excellent off-axis performance (up to 145°)
- Unique TwistFix™ grill design
- Borderless grill design
- Rotary switch for 16W, 32W, 64W and an 8 Ohm tapings
- Terminal block connection
- Shallow built-in depth (132 mm)
- Multi-tapping 70V / 100V line transformer

Product information:

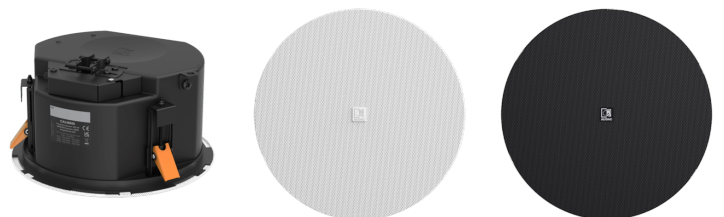
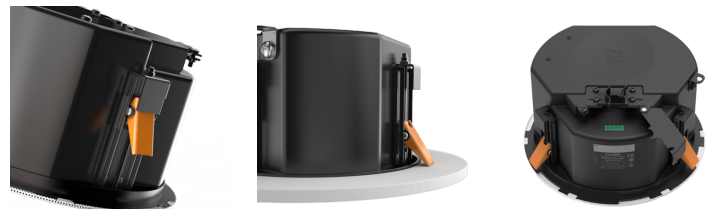
The CALI660 is a 2-way ceiling speaker with rear dome, constructed using a 6.5" cone driver, combined with an coaxially mounted 1" soft dome tweeter which is fitted with a phase plug for excellent off axis performance up to 145°.

The 2-way construction combination with metal rear-dome guarantees premium performance for demanding applications. A continuous power handling of 60 Watt (RMS) and maximum power handling of 120 watt is achieved, while fitted with a rotary switch for tapping of the 70/100V line transformer with tapings for 60W, 30W, 15W and an 8 Ohm bypass connection. What is new with CALI660II?

An enhanced weatherproof and humidity-proof coating on the speaker cone, making them even more durable for challenging open-air environments. When combined with the GLI optional grills, these updated CALI models now receive our official WeatherTreated outdoor rating, giving you full confidence in any installation.

Applications:

- Corporate
- Retail
- Bars & Restaurants



Certification:



Impedance:

Ω 8 Ohm

Voltage:

⚡ 70-100 Volt

Usage:

 Indoor  Outdoor

System specifications:

Peak power handling		240 W
Program power handling		120 W
Continuous power (AES)		60 W
Sound Pressure (Max. W/1m)	@ 100 V	(CALI660) 106 dB
		(CALI660I & CALI660II) 108 dB
	@ 8 Ω	(CALI660I & CALI660II) 108 dB
Sensitivity (1W/1m)		(CALI660) 87 dB
		(CALI660I & CALI660II) 90 dB
Dispersion	Conical	145°
Frequency	Response (± 3 dB)	90 Hz - 20 kHz
	Range (-10 dB)	70 Hz - 20 kHz
Speaker type		2-way coaxial
Connection		Ceramic screw terminal with link through (CALI660)
		Pluggable terminal block connector with link-through (CALI660I & CALI660II)
Line Transformer Tappings	1	83 Ω - 100 V / Not used - 70 V / 60 W
	2	167 Ω - 100 V / 60 W - 70 V / 30 W
	3	333 Ω - 100 V / 30 W - 70 V / 15 W
	4	667 Ω - 100 V / 15 W - 70 V / 7.5 W
Ingress Protection rating		IP56 - CALI660II (For long-term outdoor exposure use optional GLI grill)

Product Features:

Cut-out measurement	8.66 " (Ø)
Dimensions	(CALI660) 242 x 120 mm (Ø x D)
	(CALI660I & CALI660II) 242 x 138 mm (Ø x D)
Built-in depth	(CALI660) 120 mm
	(CALI660I & CALI660II) 132 mm
Operating temperature	-4 °F ~ 140 °F
Construction	ABS and powder coated steel
	Additional weatherproof & humidity proof coating to the speaker cone (CALI660II)
Mounting	SafeLatch™ mounting system
Weight	7.54 lb

Variants:

- CALI660II/W - White version (RAL9016)